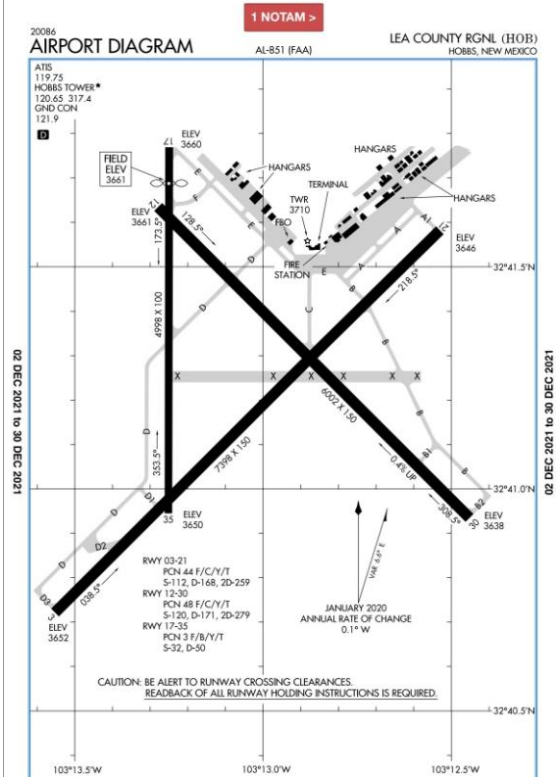


The Spirit of Aviation Young Eagles Event Handout



Introduction



Experimental Aircraft Association

Chapter 17 Knoxville

- Introductory Flights
- Education & Training
- Mentoring & Scholarships
- Project Workshop Support
- Industry Career Exposure

This package has been developed in cooperation with both the EAA & AOPA Organizations.. R.&G Mitchell
4/2023

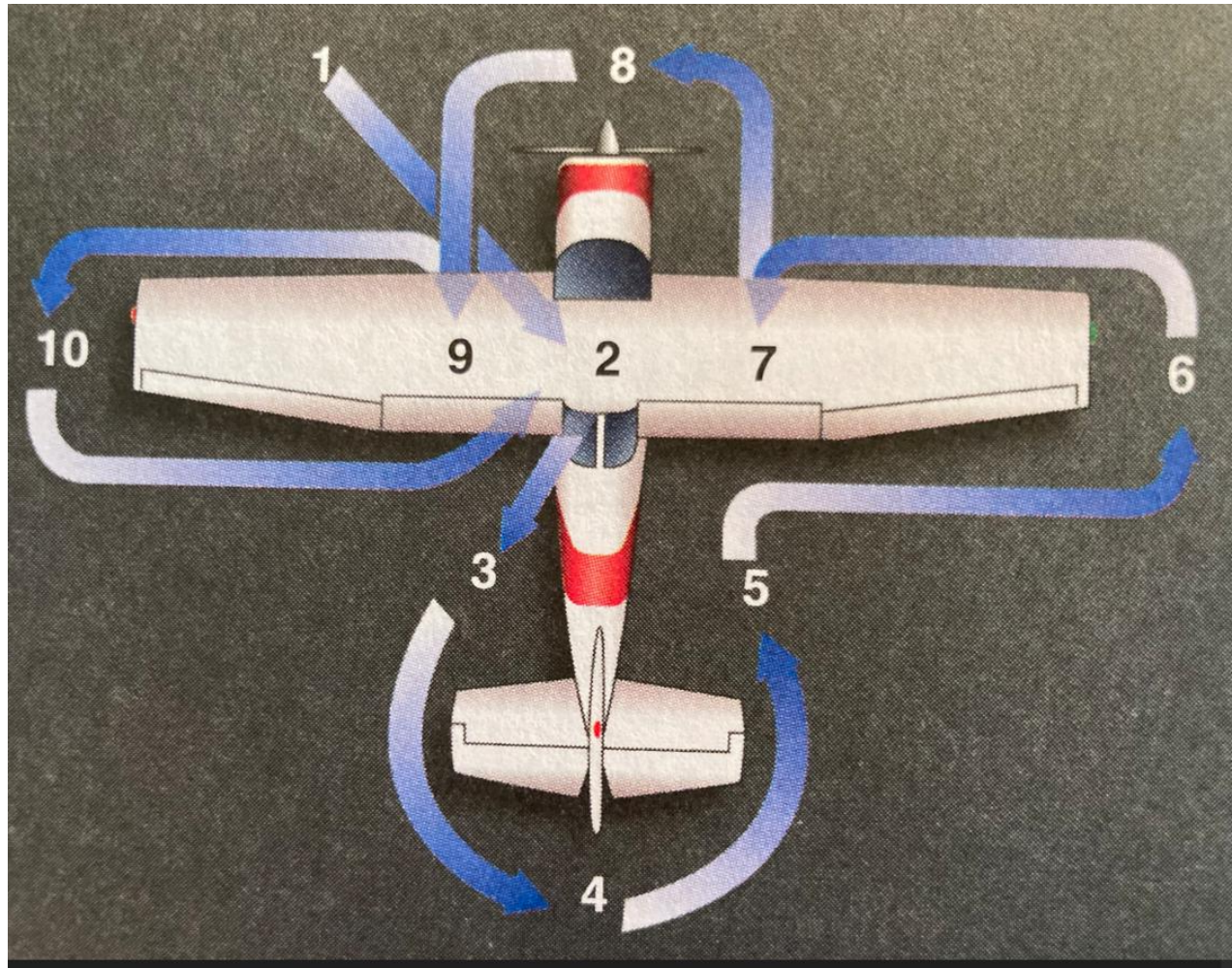
An Exciting Day

Have Fun & Enjoy the Ride

Some day you too might be a pilot giving rides to
others

Pre-Flight

- **Inspection must take place each time before the next flight:**
 - Before the first flight of the day
 - Following an intermediate airport stop
 - In Accordance to the plane's "Check List"
 - Oil & Fuel Levels
 - Mechanicals - Exterior/Interior



Safety First – Everyone has a job !

- New Technologies in General Aviation together with extended training in North America bring General Aviation to new levels (safer than bicycles, motorcycles & cars in most cases)..
- Each Pilot carrying passengers can still use everyone's help and knowing what, where and when it is important to speak-up...
- The Safety Briefing card on the right is important
- During take-off and landing pilots are very busy, they may be briefing the passengers', talking to the airport or watching for traffic HOWEVER – speak up if you feel the need...
- Read the attachment

Passenger SAFETY Briefing

N_____

S

Seat belts fastened for taxi, takeoff, landing.
Shoulder harnesses fastened for takeoff, landing.
Seat position adjusted and locked in place.

A

Air vents (*location and operation*).
All environmental controls (*discussed*).
Action in case of any passenger discomfort.

F

Fire extinguisher (*location and operation*)

E

Exit doors (*how to secure; how to open*)
Emergency evacuation plan.
Emergency/survival kit (*location and contents*).
Equipment (*location and operation*).

T

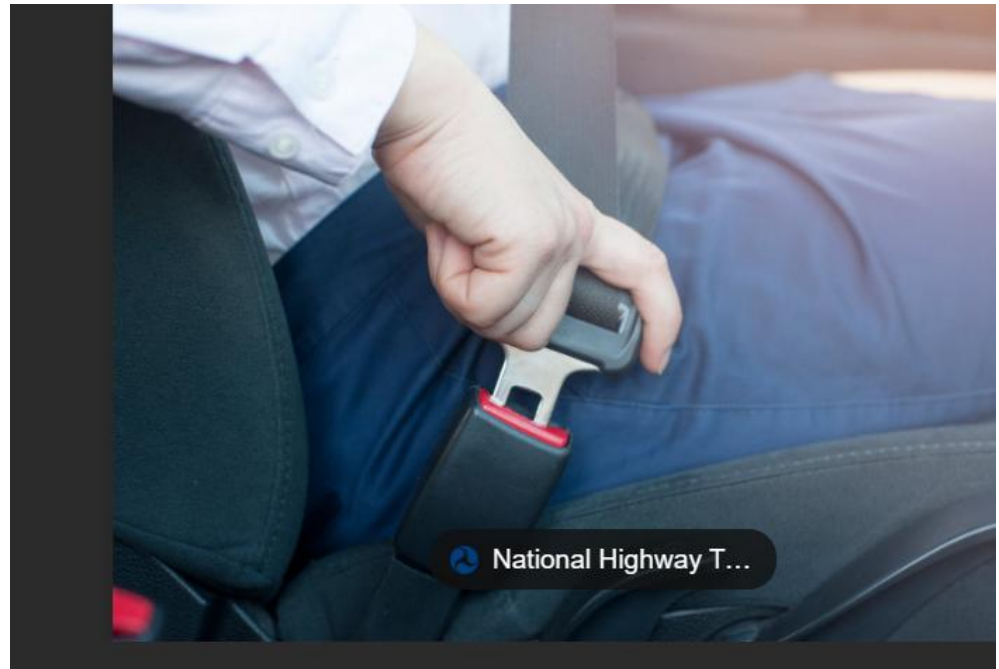
Traffic (*scanning, spotting, notifying pilot*).
Talking (*"sterile cockpit" expectations*).

Y

Your questions? (*Speak up!*)

Before Starting the Engine

- **Aircraft Seatbelts Must Be Worn**
 - When Taxiing
 - When Landing
 - During Turbulence
 - At the request of the Pilot or Crew



Today's experience included Takeoffs, Landings and Views from the Cruise Mode ! The attached slides will remind you What you Saw and Learned about...

- Flaps give generally
 - shorter ground roll
 - longer obstacle clearance distance
 - ~20° flap optimal for runway distance
- No flaps generally provides
 - longer ground roll
 - shorter obstacle clearance distance

Flaps for Takeoff?

It depends on the type of aircraft and what the manufacturer & your instructor CFI recommends



The Proper Landing View



What's Next - - Phase II

- Skill Sets Development – the Basics of Ground School & Demos
 - Taking off
 - Landing
 - Airports & Traffic Patterns
Overview